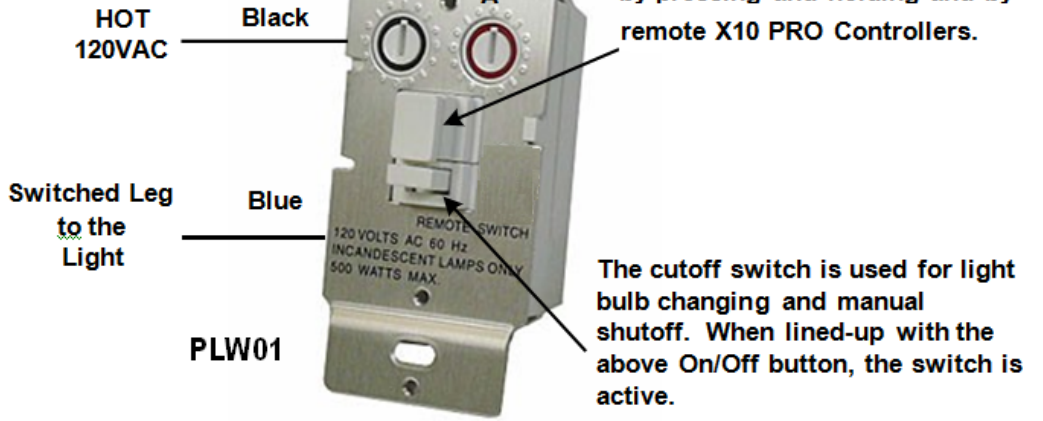


Wall Dimmer Switch - Receiver **PLW01**

Single-Pole Switch

Incandescent Bulbs Only



Description: The PLW01 Wall Dimmer Switch is designed to control incandescent bulbs (only) with a rating of 40 to 500W. Bulbs rated below 40W may flicker and/or operate erratically. A pushbutton is provided for local On/Off control and manual bright / dimming operation. A Power Cutoff Switch located directly below the Local On/Off Pushbutton is provided for bulb changing. Both switches should line-up for normal operation.

DO NOT USE WITH: APPLIANCES, MOTORS, LOW VOLTAGE LIGHTS OR FLUORESCENT LIGHTS

Specific Requirements: 120VAC, 40-500W, Incandescent Bulbs Only.

Optional / Supplementary Devices & Modules:

XPT2D Wall Transmitter, PMC01 Desk-top, Plug-in Mini-Controller, PHK05 RF Wireless Handheld Remote Kit, XPMT1 Desk-top, Plug-in Digital Clock Timer.

X10 Protocol:

House Code Dial - Letters A-P **Unit Number Dial** - Numbers 1-16

Each X10 Receiver Module is set to a unique Unit Number or to an identical Unit Number as desired.

Each X10 Controller operating a specific set of Receiver Modules must be set to the same Letter Code as the Receivers they are controlling.

Responds to ALL LIGHTS ON command

Electrical Protocol:

Nearly all residential homes are wired SPLIT-PHASE. Each 120V Phase is NOT directly connected with the other 120V phase. If after installation, an X10 Receiver does not respond to a remote Controller, then check to ensure that the breaker serving the X10 Receiver is on the same phase as the Controller. If not, the breaker can be changed to the opposite phase. An alternative solution is recommended, to install a Phase Coupler for improving remote communications throughout the home. See www.x10pro.com, then select Technical Support and PLC Troubleshooting.

Installation:

1. Turn power OFF at Circuit Breaker.
2. Pull-out the existing wall switch from the switch box.
3. Remove the existing wall switch. Two wires remain protruding out of the switch box. One is HOT (Line), the other goes to the light (Switched Leg). They may be the same color.
4. With Breaker ON, determine which protruding wire is HOT. Use a voltmeter and measure between ground and each wire individually. One will read 120V, the other 0V.
5. With Breaker OFF, Connect the HOT wire to the BLACK wire, connect the other wire (light) to the BLUE wire.
6. Re-check all connections, Turn power ON to circuit. Slide the Power Cutoff Switch to ON position.
7. Press switch button once, the light should turn ON. Press button again, the light should turn OFF.
8. You are now ready to control the switch with an X10 Remote Control device: Desktop, Wireless Handheld, Security Panel, etc. The default address is "A1". If you wish to change the Address Code, the Code Dials require a small flat screwdriver to turn.
9. Attach the switch cover plate.

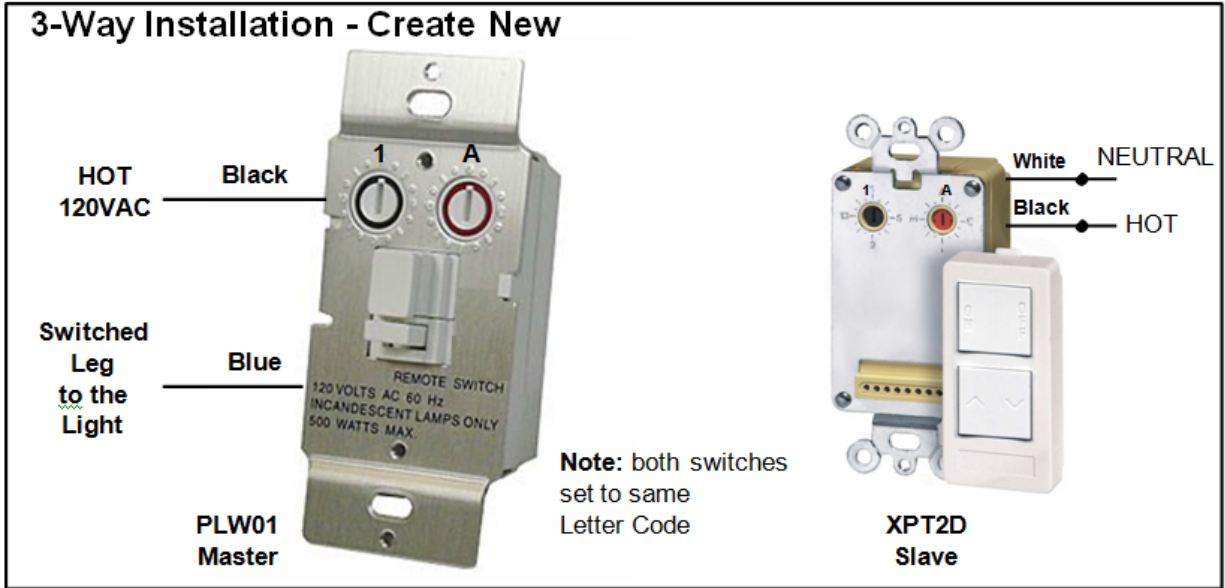
Soft Start On and Fade Off plus Bright / Dim Control:

On/Off - A short key press causes the Switch to come **on at full dim and fade up to the full intensity**, another short key press causes the Switch to **fade off** (brightening to full intensity and fading to full off takes approx 3 seconds each direction).

Dimming from ON - **Press and hold to achieve the dim level desired then release.** When released, the direction of dimming is toggled, (i.e. next press and hold will cause the switch to brighten). **A short key press from any dimmed level will fade off the Switch. A dimmed Switch will resume the level of intensity when turned back on** (i.e. if dimmed to 50% then turned off, the Switch will resume at 50% when turned back on).

Note: If you would like the Switch to always resume full intensity when turned on, then press and hold the key until the Switch attains full brightness before releasing. Then a short key press will fade off. Additionally, any X10 Controller can remotely operate the full functions of the Switch.

Wall Dimmer Switch - Receiver PLW01



Installation: for 3-Way operation - Create New (when no extra wires between switches are available)

Note: A 3-Way / 4-Way system, by definition, means two or more existing wall switches which operate one single light (can be multiple lights if all come on together). In this Create NEW installation instruction, there are no traveler wires between switches. The XPT2D Transmitter will be connected to HOT and NEUTRAL only. It will communicate with the Master Switch via existing power wires. The XPT2D Transmitter provides ON/OFF and Bright/Dim.

1. Turn power OFF at Circuit Breaker.
2. Pull-out the existing wall switch from the switch box.
3. Remove the existing wall switch. Two wires remain protruding out of the switch box. One is HOT (Line), the other goes to the light (Switched Leg). They may be the same color.
4. With Breaker ON, determine which protruding wire is HOT. Use a voltmeter and measure between ground and each wire individually. One will read 120V, the other 0V.
5. With Breaker OFF, Connect the HOT wire to the BLACK wire, connect the other wire (light) to the BLUE wire.
6. Re-check all connections, Turn power ON to circuit. Turn the Power Cutoff Switch to ON position.
7. Press switch button once, the light should turn ON. Press button again, the light should turn OFF.
8. Install the XPT2D Wall Transmitter Switch. You will need an existing or new switch box which has power run to it.
9. With Breaker OFF, connect the XPT2D Black wire to HOT, connect the XPT2D white wire to Neutral. Turn Breaker ON.
10. Press the XPT2D Switch "ON" position once, and the light should turn ON. Press the XPT2D Switch "OFF" position once, and the light should turn OFF.
11. To change the XPT2D Address Code, remove the Keypad, with fingers pulling from bottom, then turn the dials, with small flat screwdriver, to the desired Address Code. Keep the PLW01 and XPT2D Address Codes identical.
12. You are now ready to control the PLW01 switch with an X10 Remote Control Module: Desktop, Wireless Handheld, Security Panel, etc. The default address is "A1". If you wish to change the Address Code, the Code Dials require a small flat screwdriver to turn.
13. Attach the switch cover plates.

Note: the XPT2D Transmitter uses a "decorative" wall plate, whereas the PLW01 uses a "standard" wall plate.

Note: If you press the Key on the PLW01 the lights will come ON/OFF, dimming is performed by holding the Key to achieve the desired level, (see dimming instructions below) and additionally from the XPT2D Transmitter.

Note: You can use additional XPT2D Wall Transmitter Switches to augment new 4-Way or greater systems. You will need additional wall switch boxes with power run to them. Then install the XPT2D, connecting HOT and Neutral.

Soft Start On and Fade Off plus Bright / Dim Control:

On/Off - A short key press causes the Switch to come **on at full dim and fade up to the full intensity**, another short key press causes the Switch to **fade off** (brightening to full intensity and fading to full off takes approx 3 seconds each direction).

Dimming from ON - **Press and hold to achieve the dim level desired then release.** When released, the direction of dimming is toggled, (i.e. next press and hold will cause the switch to brighten). **A short key press from any dimmed level will fade off the Switch. A dimmed Switch will resume the level of intensity when turned back on** (i.e. if dimmed to 50% then turned off, the Switch will resume at 50% when turned back on).

Note: If you would like the Switch to always resume full intensity when turned on, then press and hold the key until the Switch attains full brightness before releasing. Then a short key press will fade off. Additionally, any X10 Controller can remotely operate the full functions of the Switch.